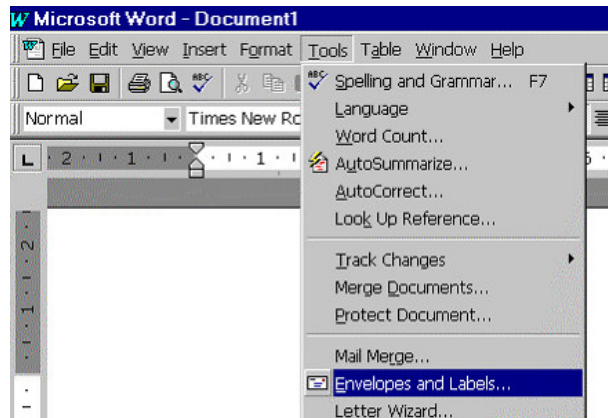


Pauli A4 8554V Business Card white with Microsoft Word ('97, 2000 and XP)

1. Select item **'Envelopes and Labels'** in the **'Tools'**-Menu in MS-Word.



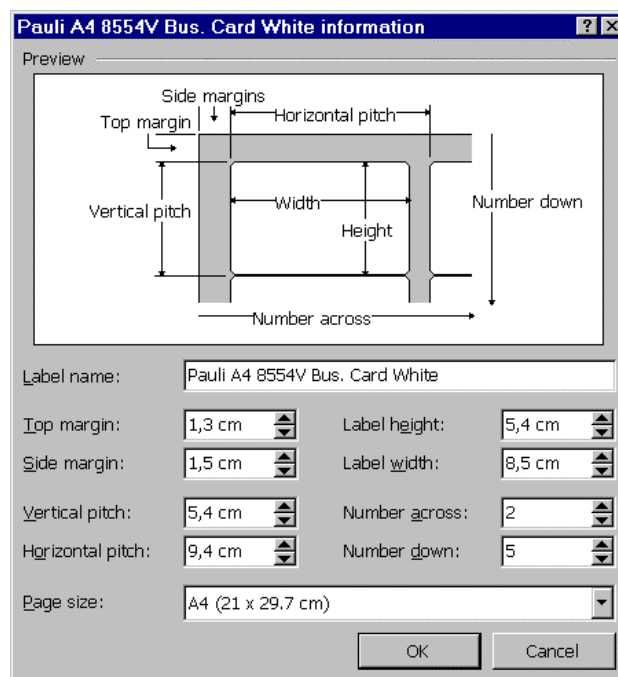
2. Click on the **'Options...'**-button

Options...

3. Click on the **'New Label...'**-button

New Label...

4. Enter Labels size as shown in the screen shot on the right side:



5. Click on **'OK'** button

OK

6. Click on **'OK'** button

OK

7. Now when you click on the **'New Document'** button, Word will create a template with the selected label size.

New Document